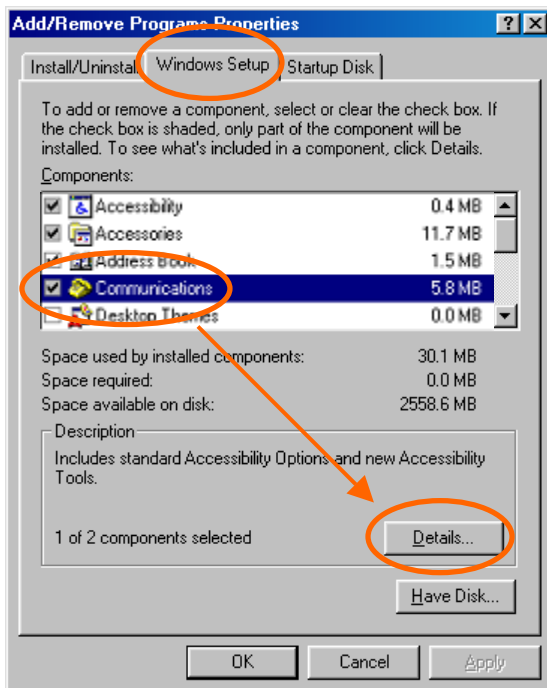
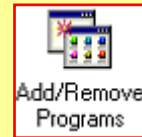
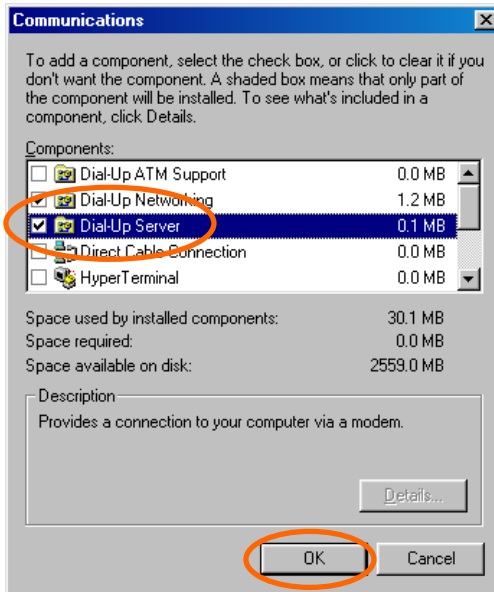


1. My computer
 - ▶ Control Panel
 - ▶ Add/Remove Program Properties

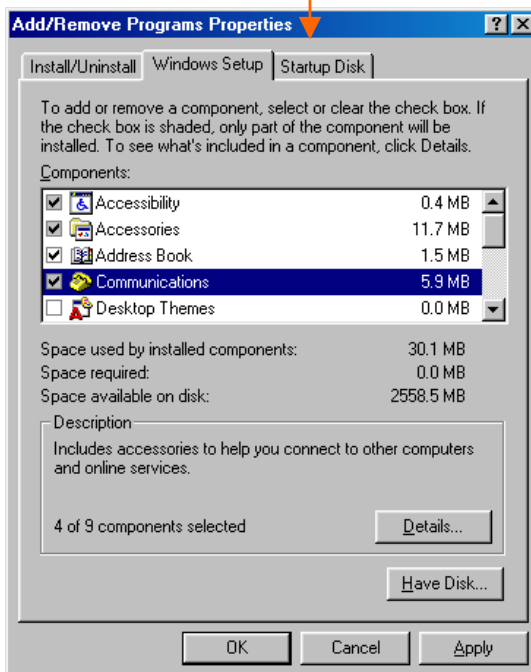


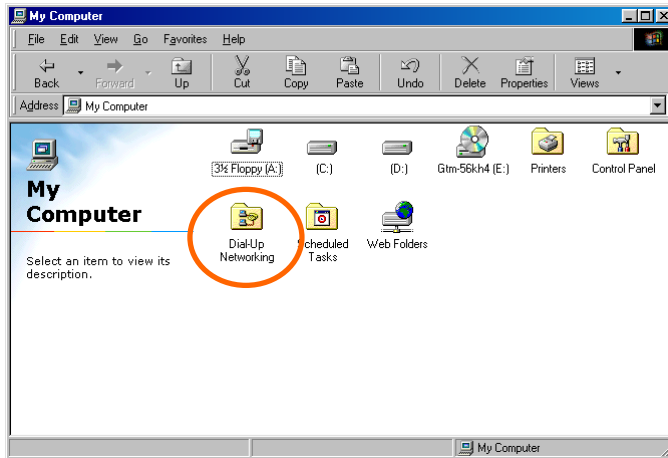
2. Windows Setup
 - ▶ Communications and Click "Details".



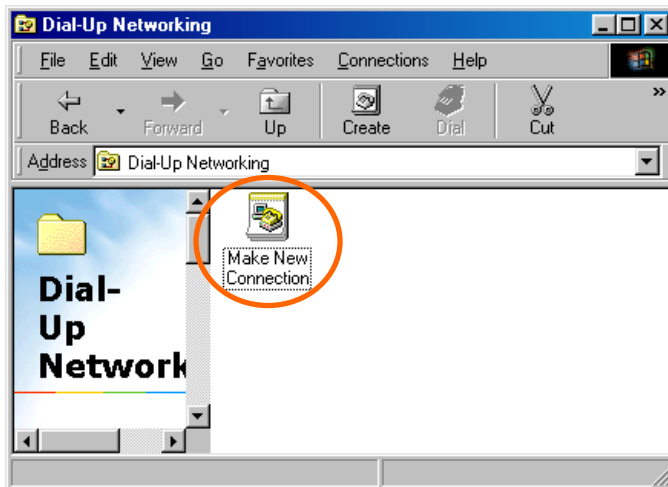
3. Select "Dial-Up Server".

and Click OK.

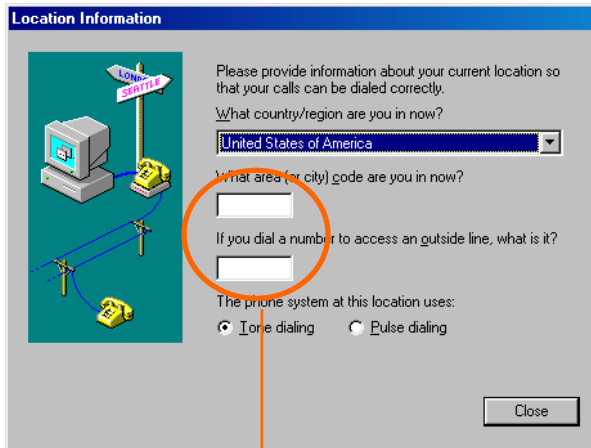




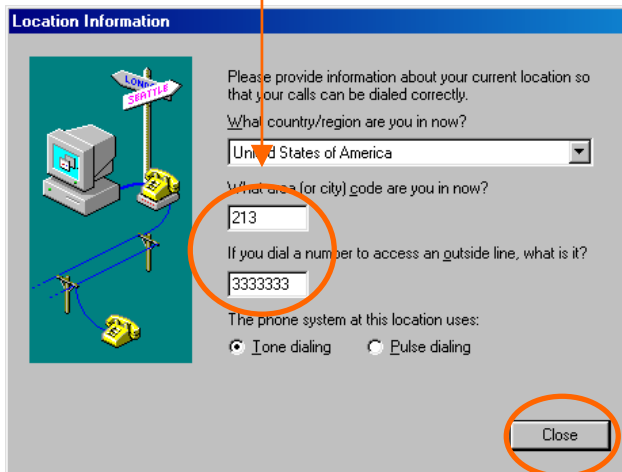
4. My computer ►
Dial-Up Networking

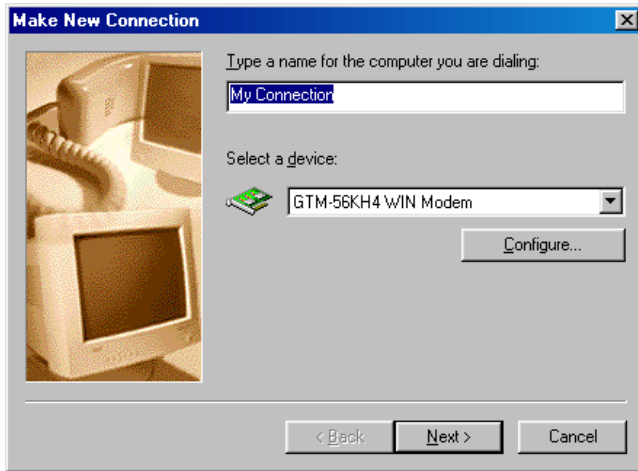


5. Double click
Make New Connection

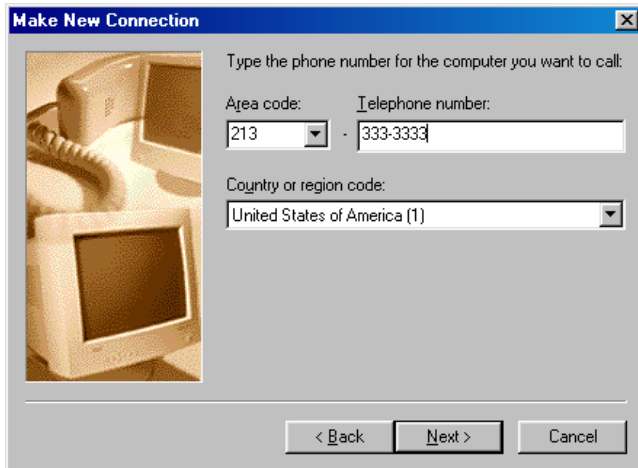


6 . Insert any number
and Click **Close**.

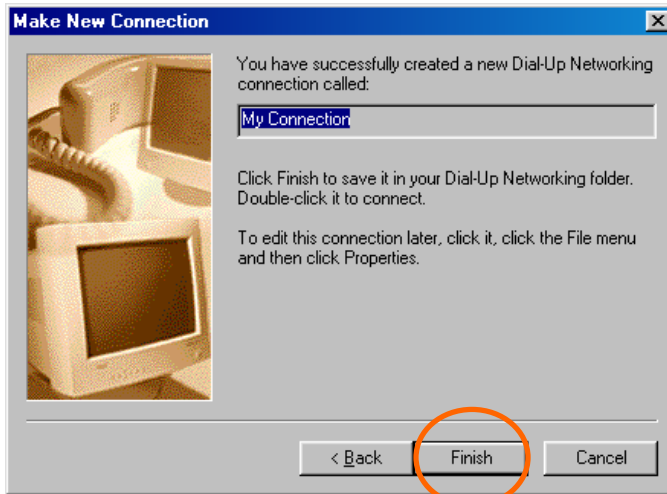




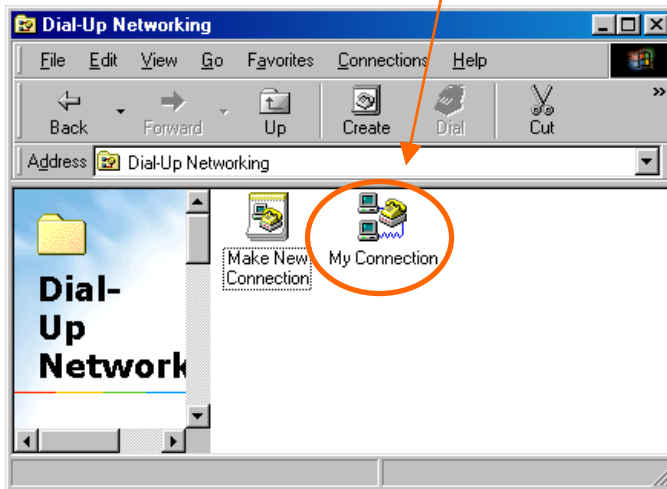
7 . Click **Next**.

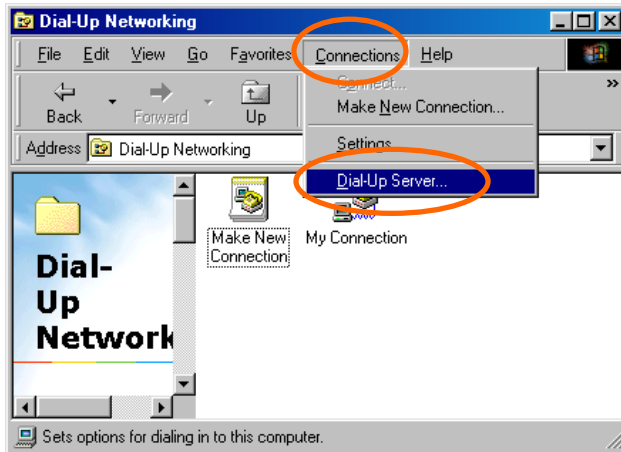


8 . Click **Next**.



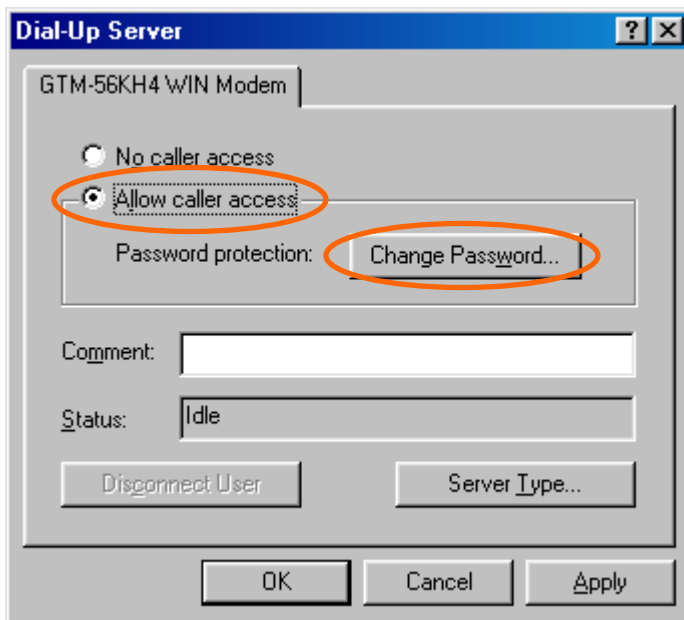
9. Click "Finish"





10. Connections

► Dial-Up Server

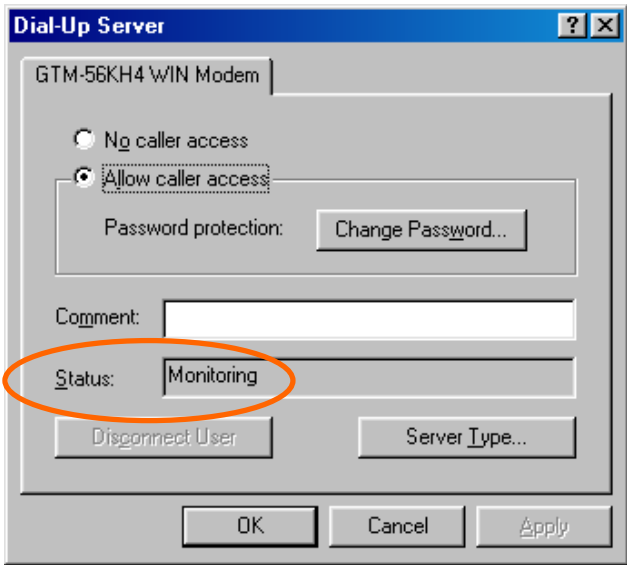


11. Select Allow caller access

► Change Password



12. Insert "1" for New password, Confirm new password and Click Apply.



13. Make it sure Status as Monitoring.

*Modem Setup is complete.