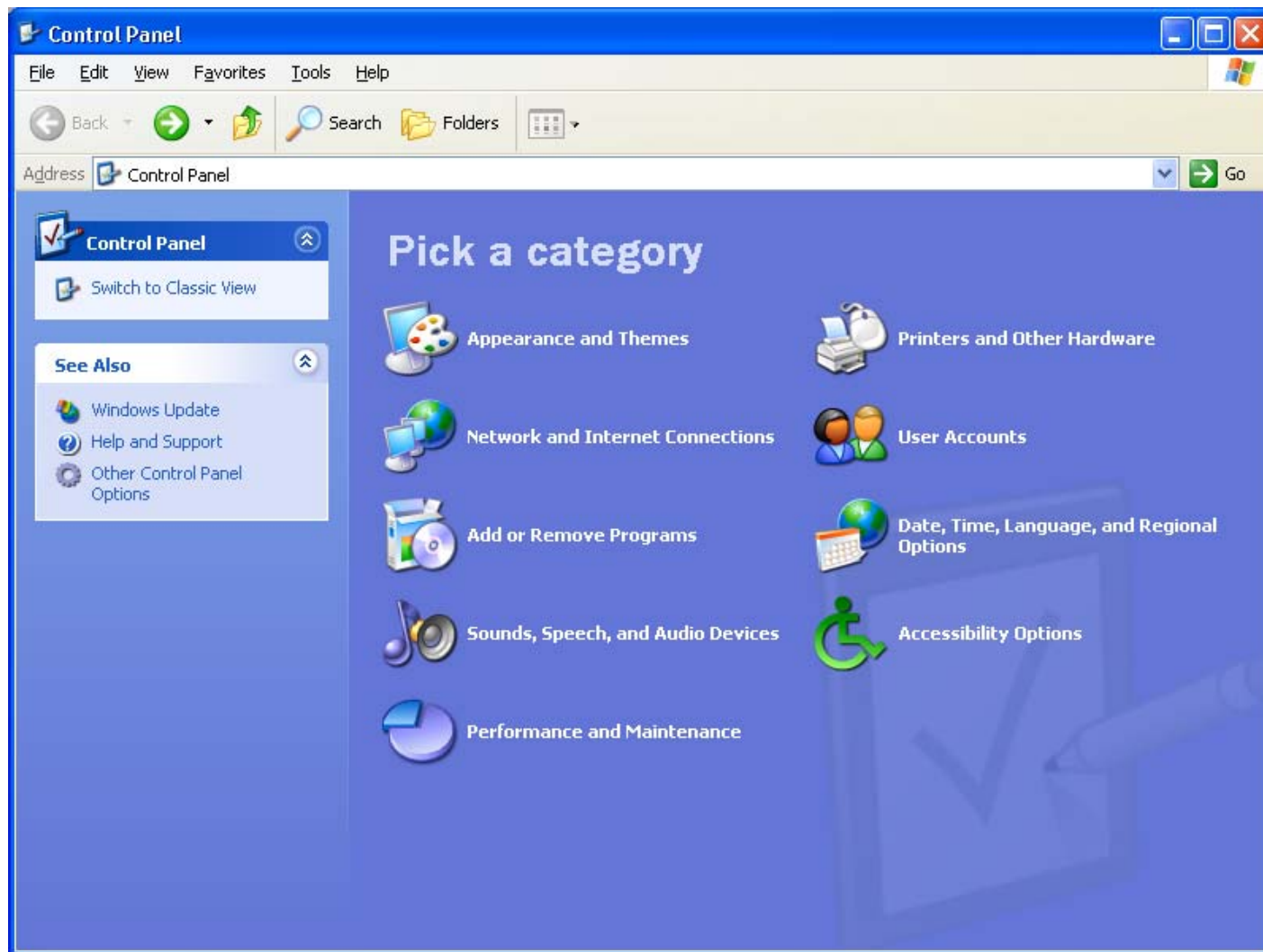
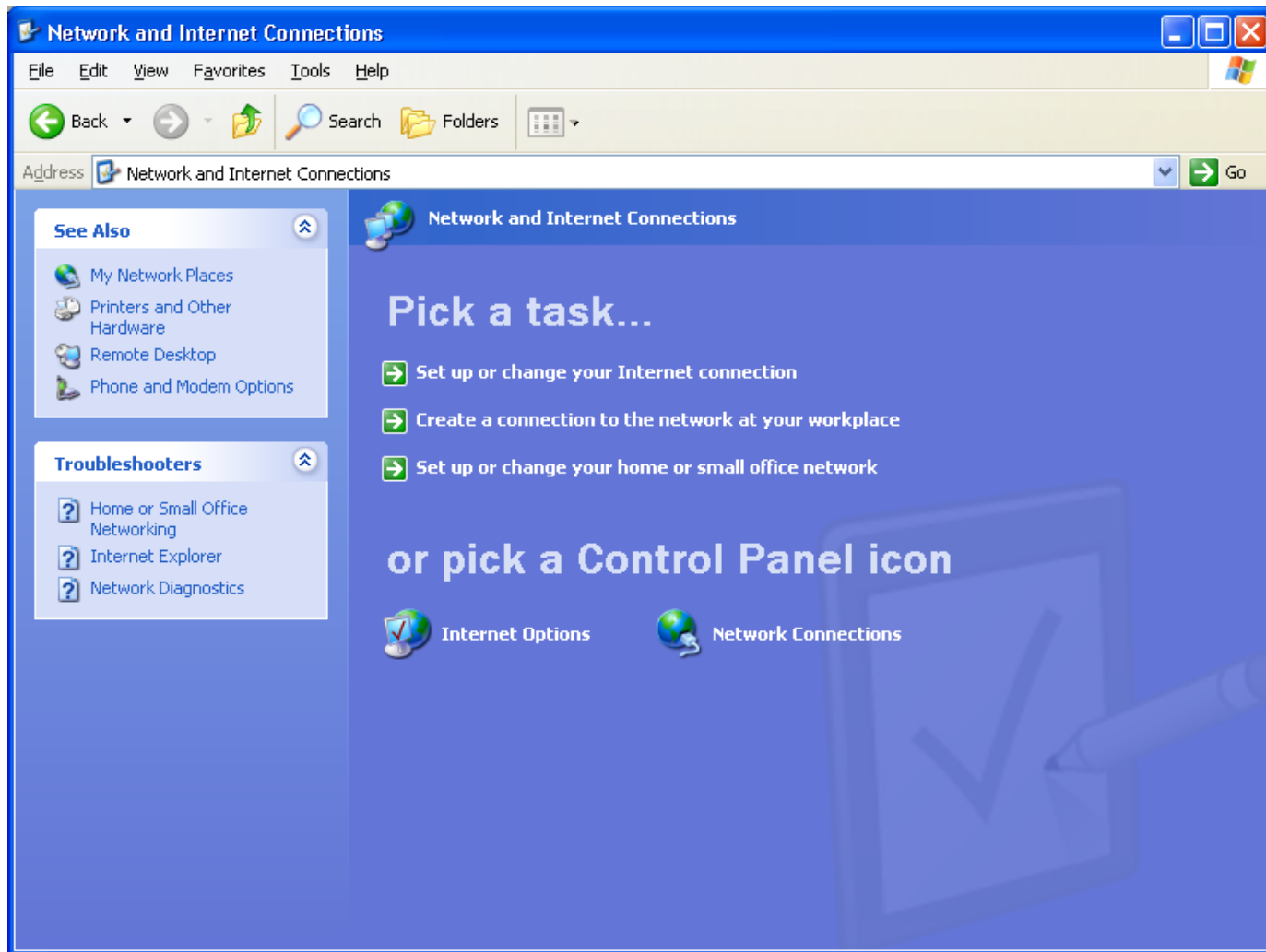


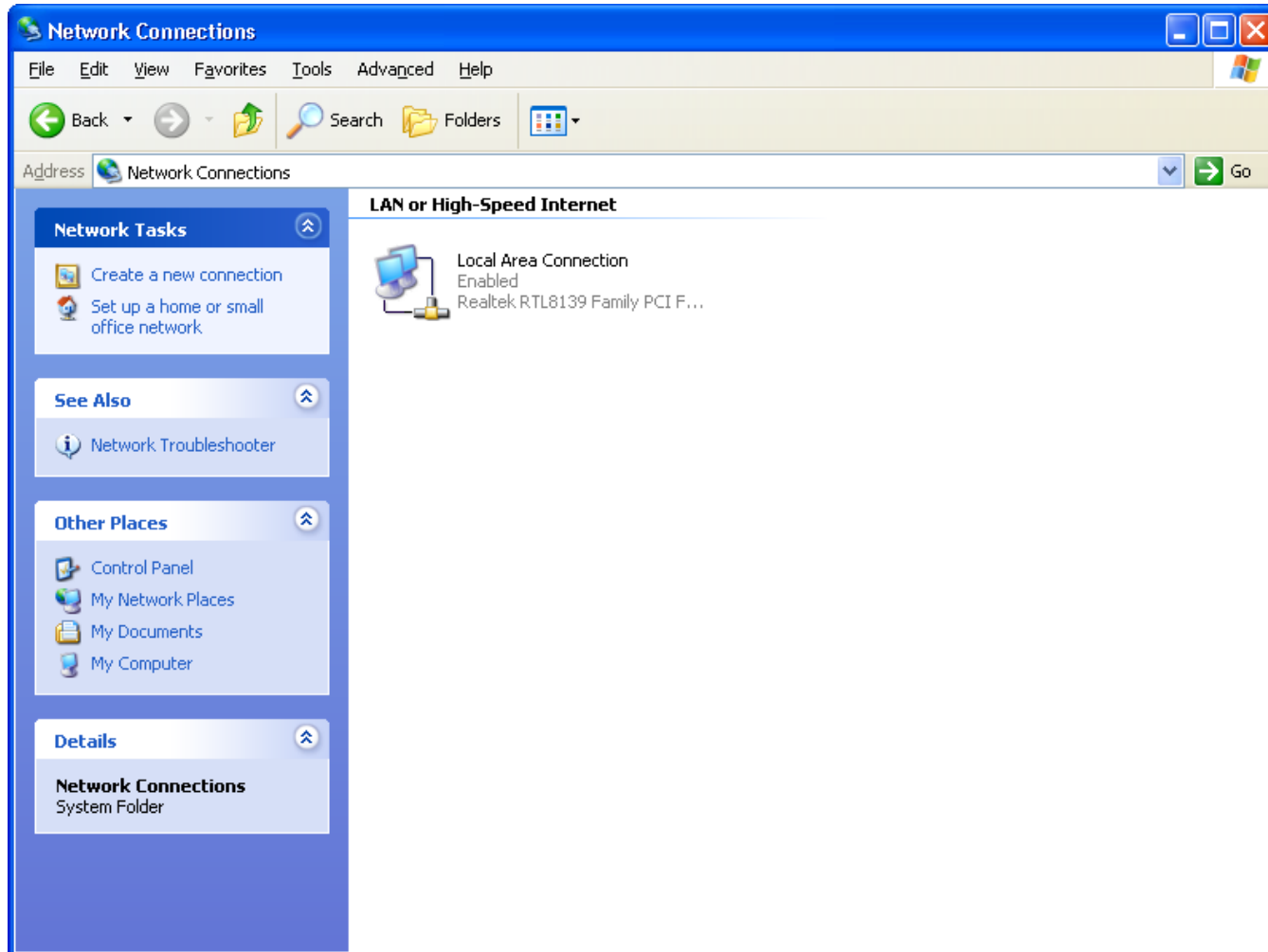
1. Choose “Network and Internet Connections” from Control Panel.



2. Choose “Network Connections”.



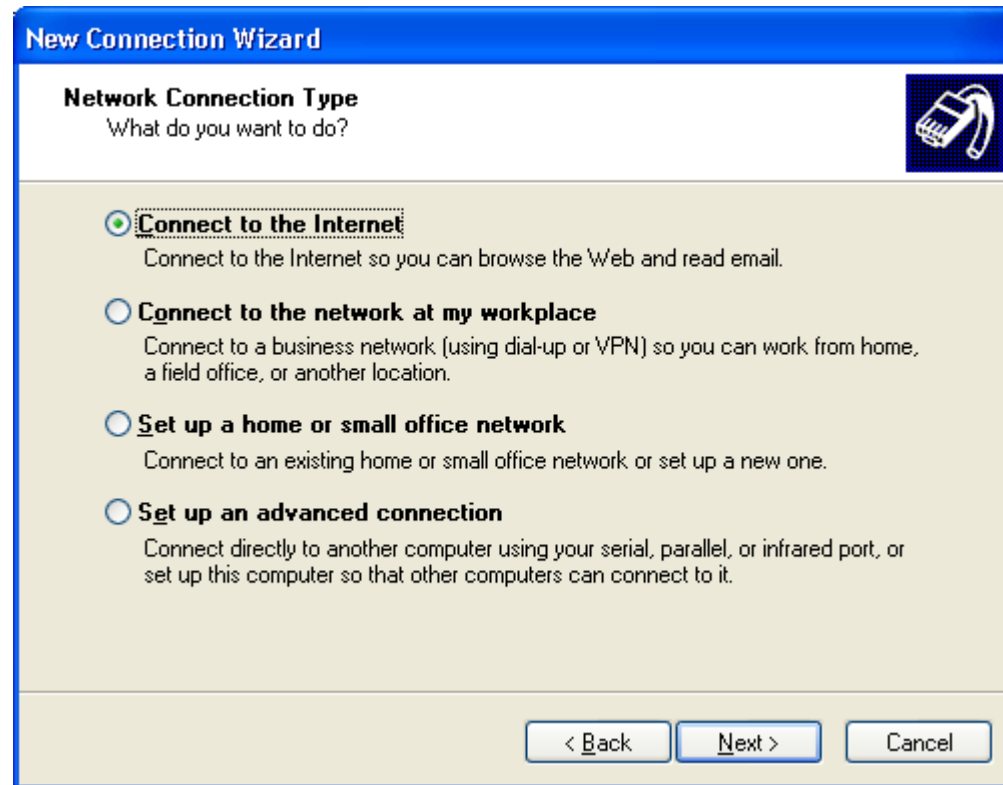
3. Choose “Create a new connection”.



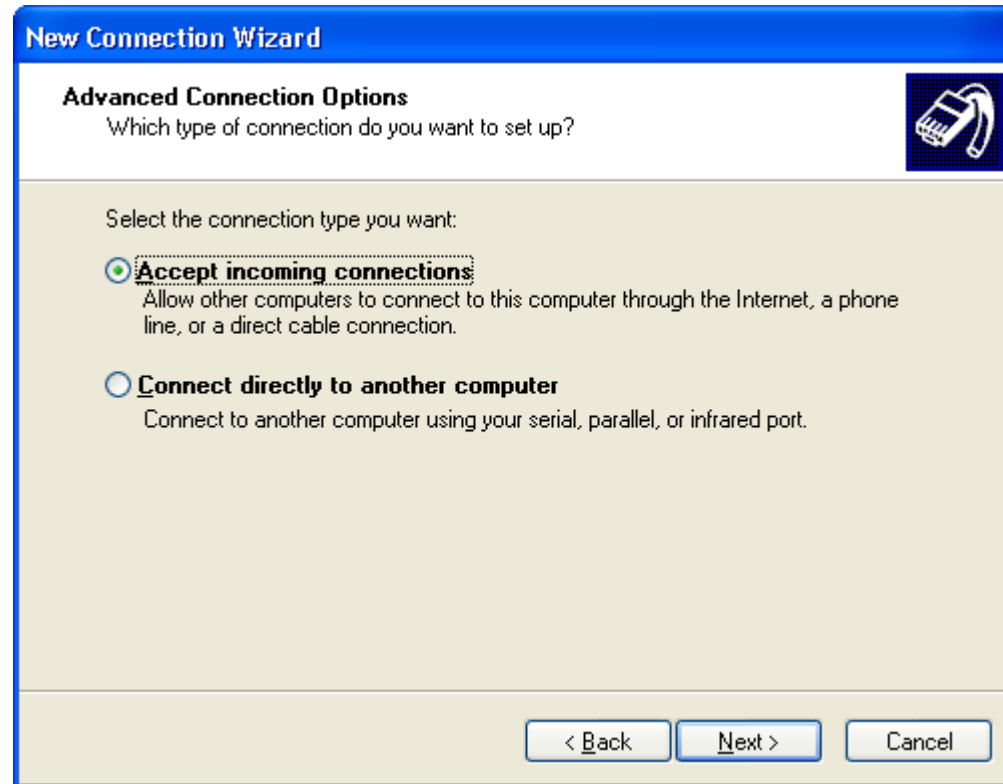
4. Start “New Connection Wizard” by clicking “Next”.



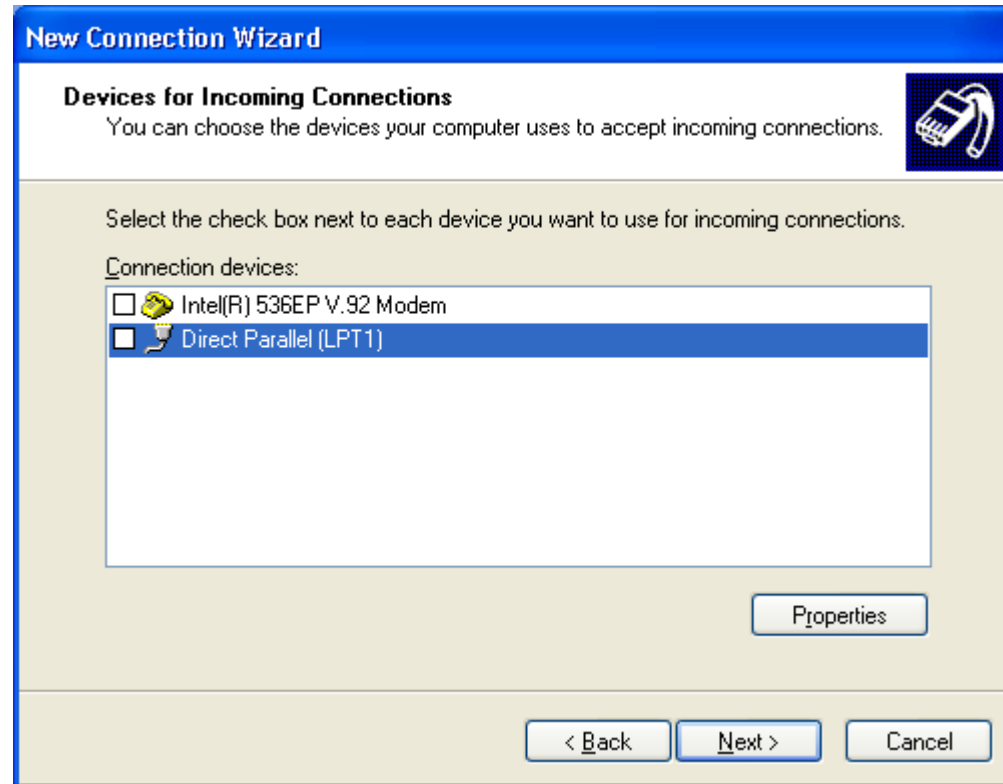
5. Choose “Set up an advanced connection” and go next.



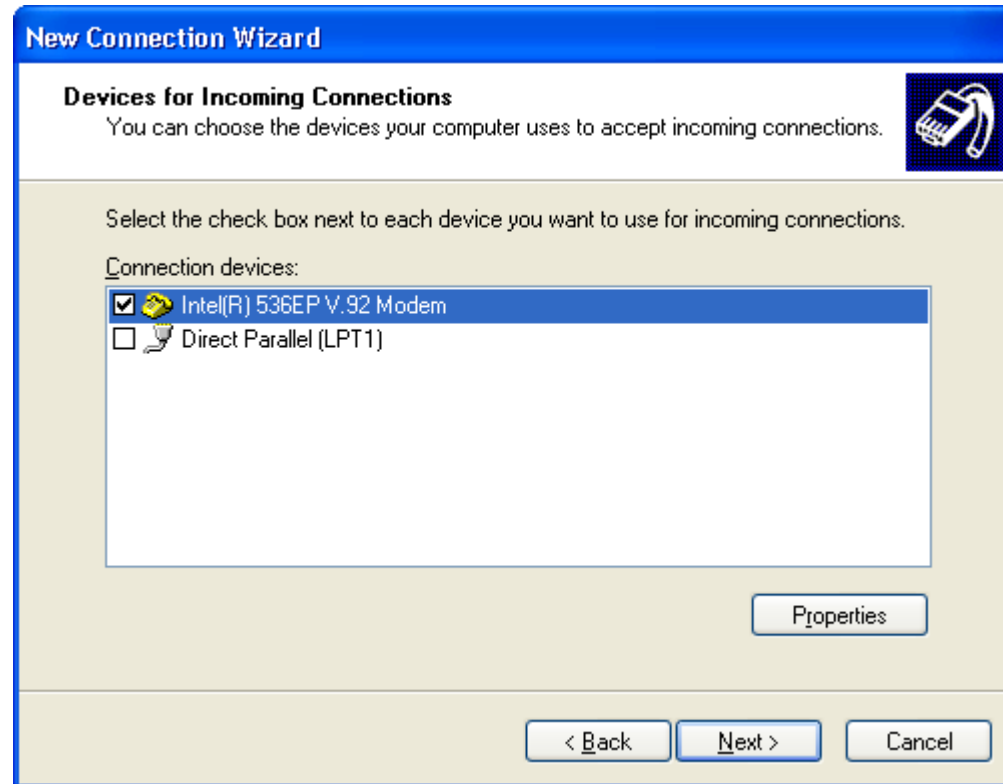
6. Choose “Accept incoming connections” and go next.



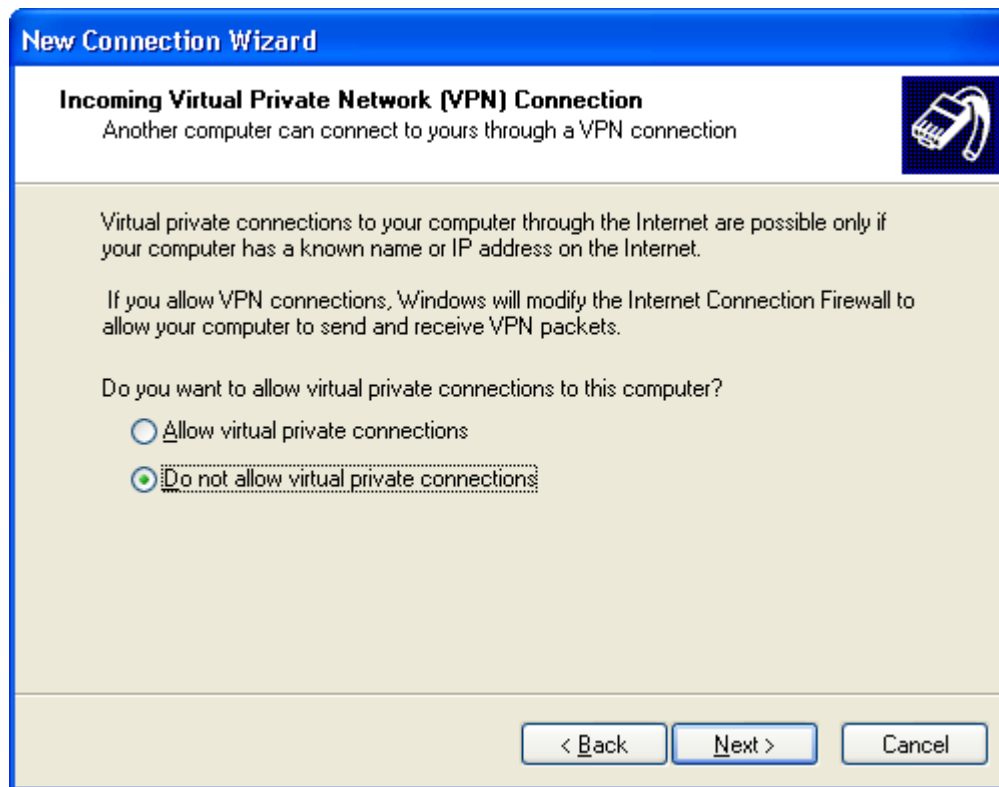
7. The Window for “Devices for Incoming Connections” will be displayed.



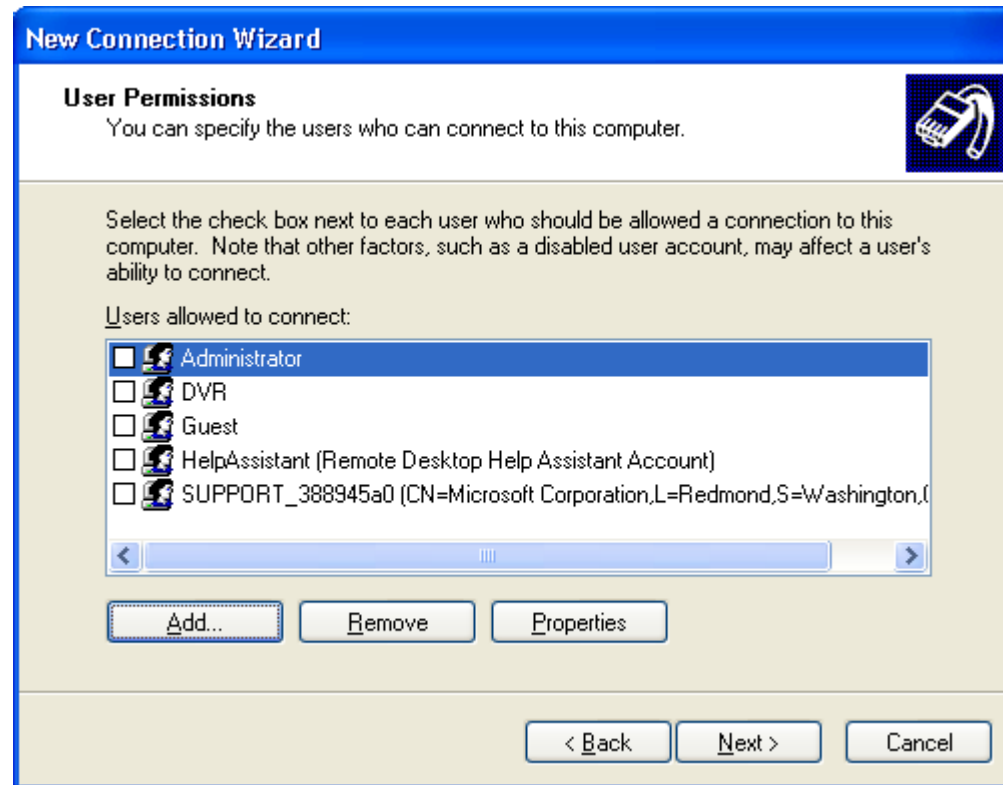
8. Choose the appropriate Modem line connected to your computer and go next.



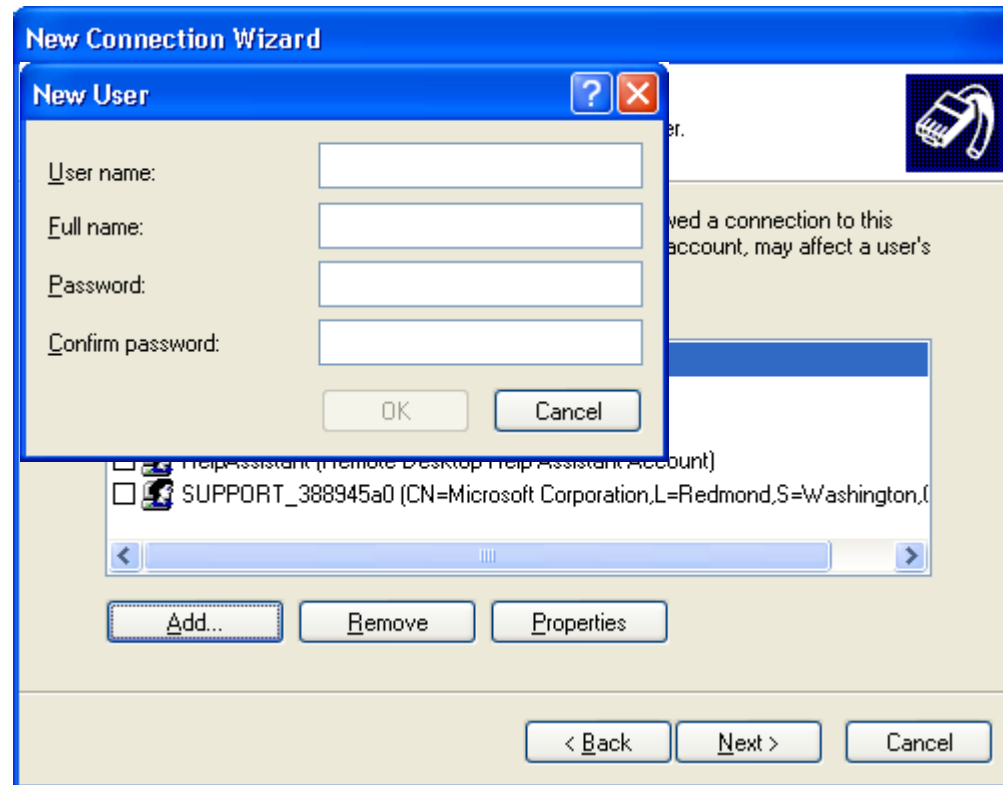
9. Choose “Do not allow virtual private connection” and go next.



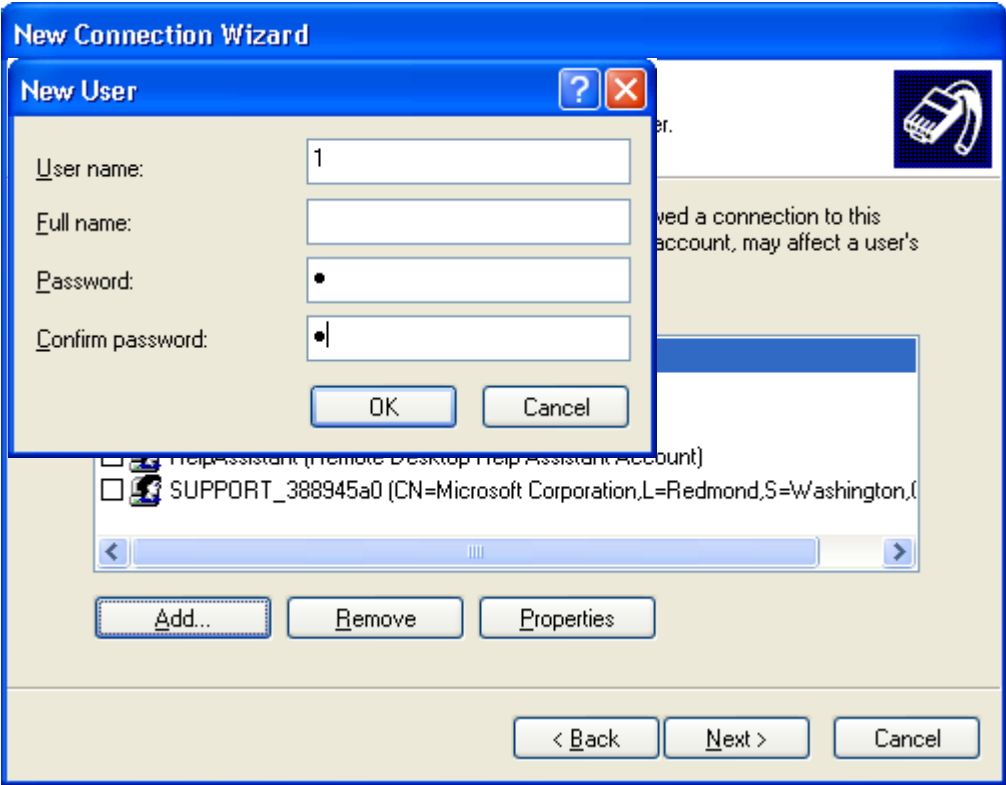
10. The window for User Permissions will be displayed.  
Click “Add” button.



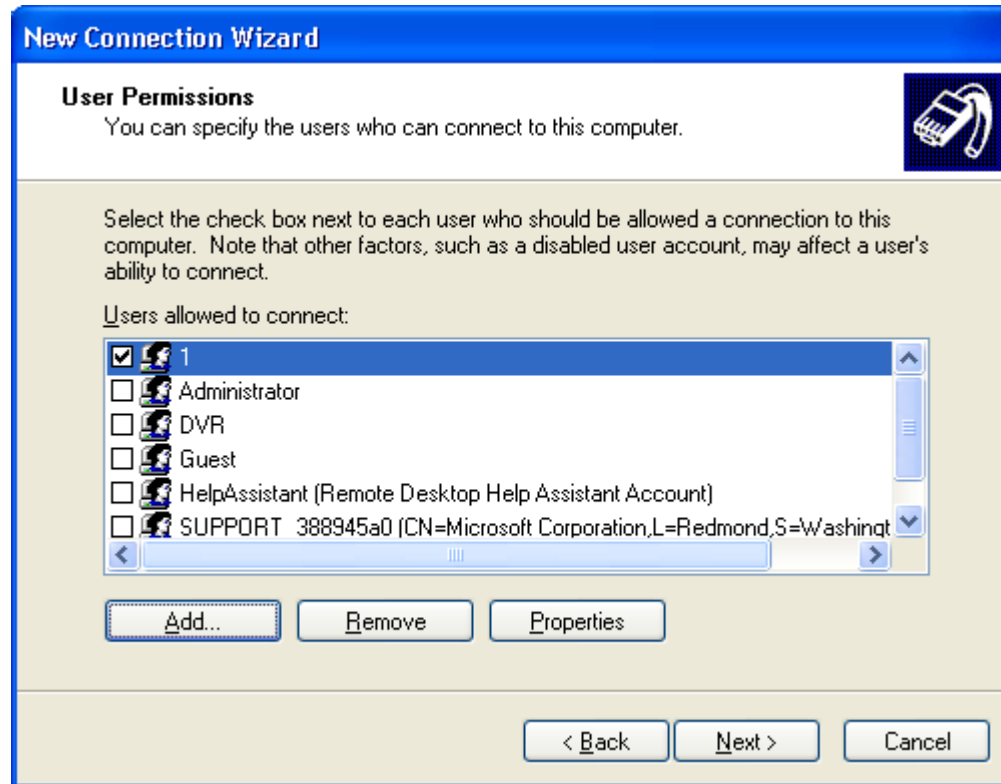
11. The window for New User will be displayed.



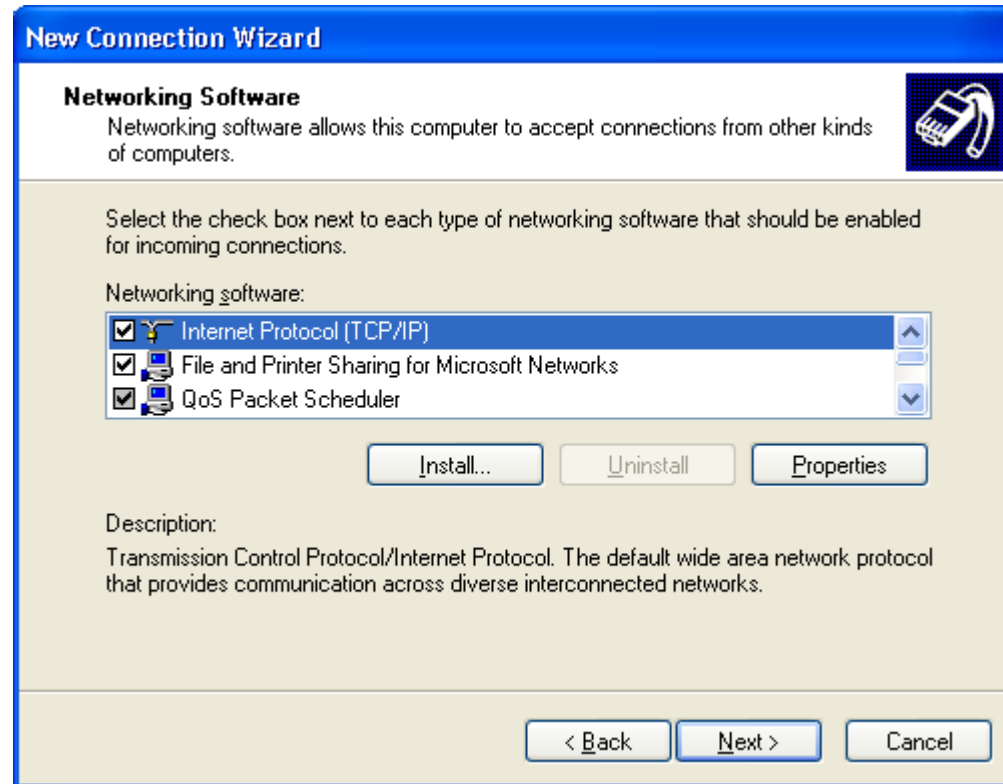
12. Insert any letter or number, i.e.“1”, to the followed columns User name, Password and confirm password and click OK.



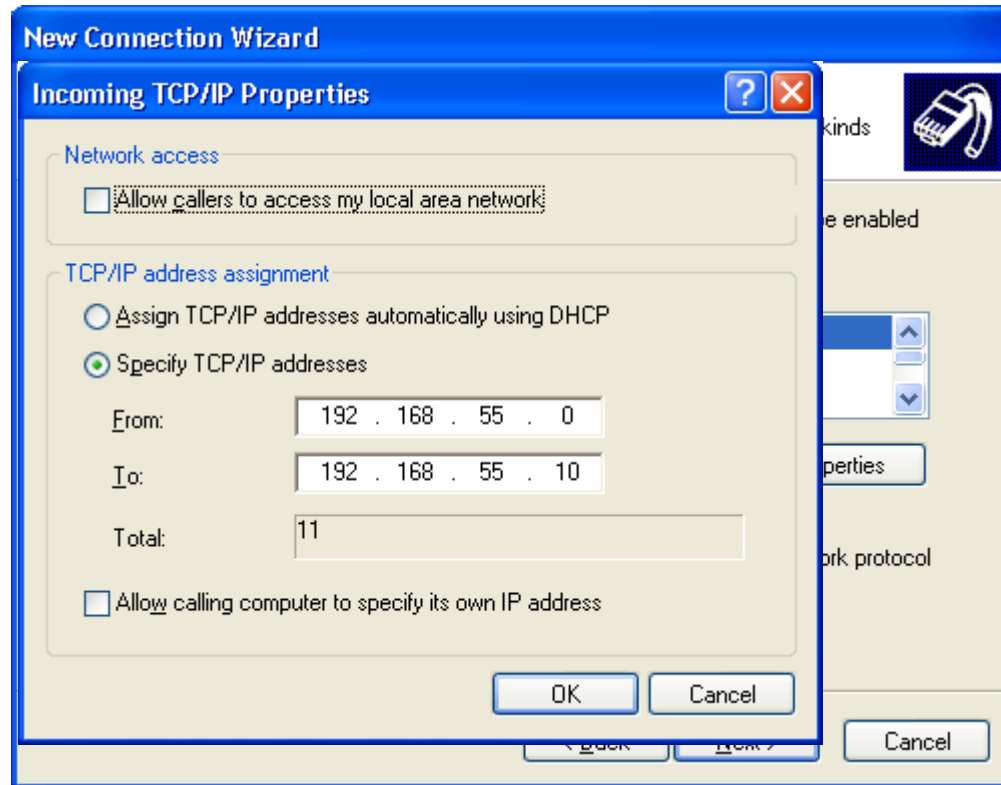
13. Check if the user name, i.e. "1", is shown on the window for User Permissions. If it is, go next.



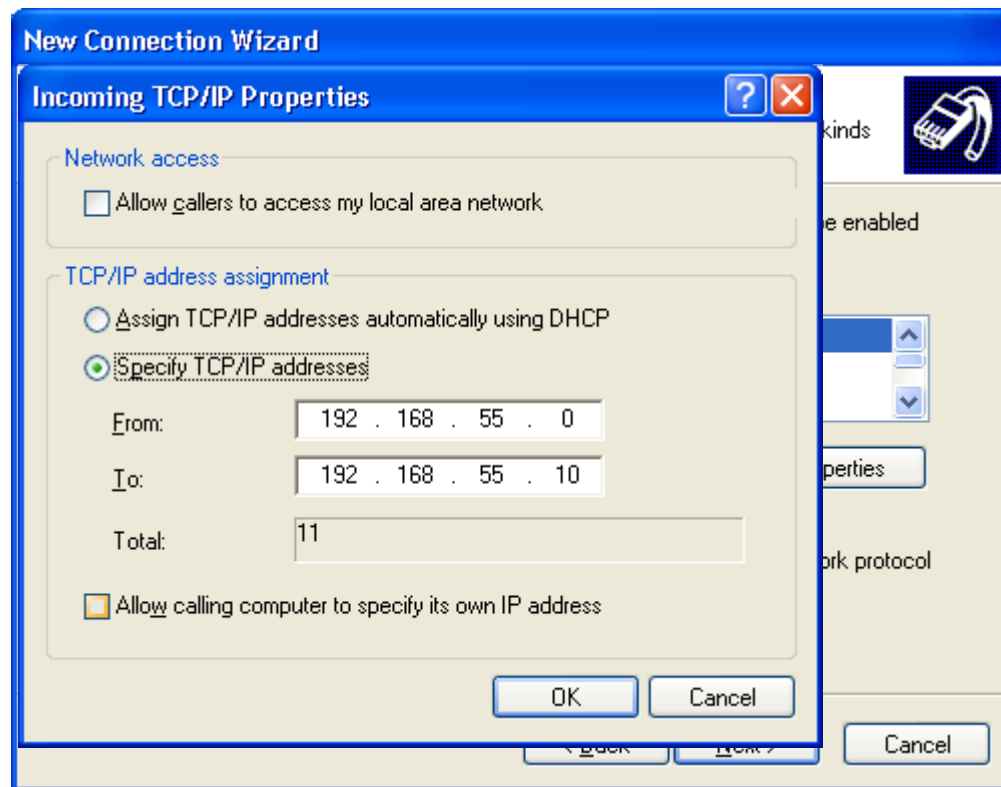
14. Choose “Internet Protocol(TCP/IP) and click “Properties”.



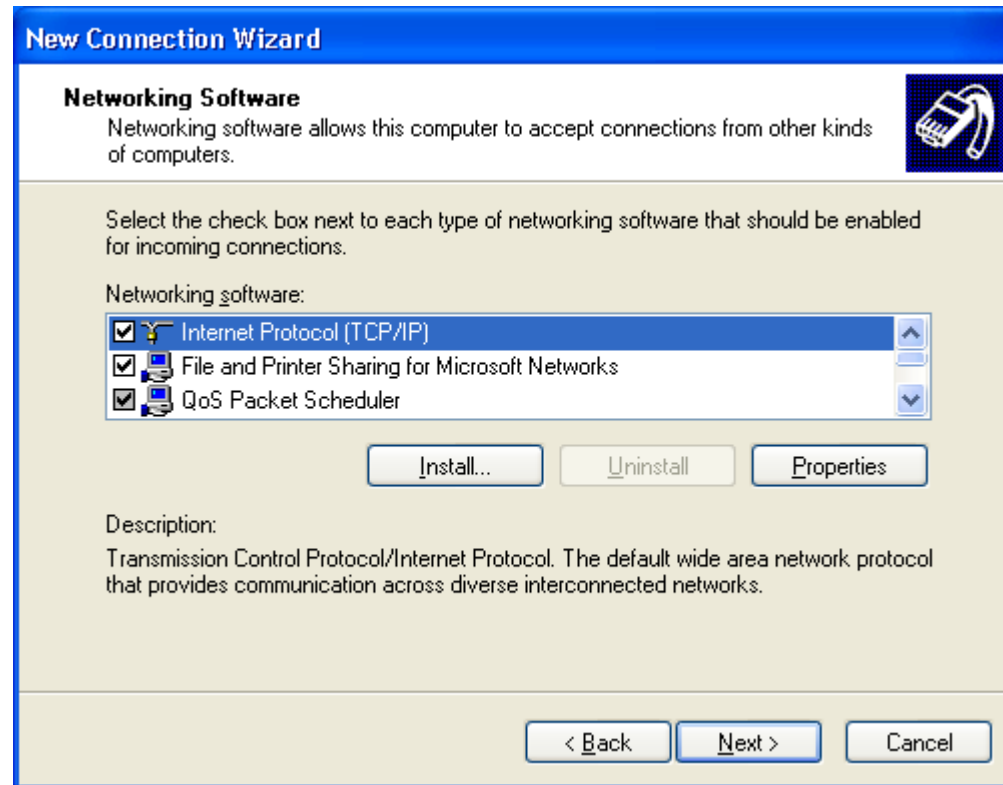
15. The window for “Incoming TCP/IP Properties” will be shown as below.



16. Cancel “Allow callers to access my local area network”, and then tick “Specify TCP/IP addresses”. Insert “192.168.55.0” for ‘From’ column and “192.168.55.10” for ‘To’ column and click “OK”.



17. Go to next.



18. Click “Finish” when you see “Completing the New Connection Wizard” sign.



19. Now, the network installation has completed, then “Incoming Connections” will be shown on your screen.

